

KHSAA Basketball - Game Box Score

Butler Bearettes vs. Wayne County Cardinals

Date: 03/26/2004 Time: 12 Noon CST Site: Diddle Arena-Bowling Green, KY Attendance: N

Visitors: Wayne County Cardinals

##	Name	P	FG	3 Pt	FT	PTS	ORB	DRB	TR	PF	AST	TO	BS	ST	MIN
10	* Kenita Ball		1/2	1/1	5/8	10	0	0	0	4	2	6	0	0	29:45
12	Kara Gothrup		0/2	0/2	0/0	0	0	0	0	0	0	2	0	0	3:58
13	Mandi Perkins		0/0	0/0	0/0	0	0	0	0	1	0	1	0	0	3:46
14	Heather Stearns		0/0	0/0	0/0	0	0	0	0	0	0	0	0	0	DNP
15	Courtney Duncan		0/1	0/1	0/0	0	1	0	1	0	0	2	0	0	8:55
20	Lindsey Jones		0/0	0/0	0/0	0	0	0	0	0	0	0	0	0	0:01
21	* Natalie Brown		1/2	0/3	4/4	6	1	0	1	4	0	2	0	2	21:10
22	* Ashley Bell		5/12	0/2	2/4	12	3	10	13	5	1	3	0	3	31:03
23	* Sarah Wixson		0/2	0/1	0/0	0	0	3	3	3	0	2	0	3	30:31
24	Lindsey Dishman		0/0	0/0	0/0	0	0	0	0	0	0	0	0	0	DNP
25	* Latoyia Green		2/3	1/4	4/4	11	3	6	9	0	0	2	0	0	30:51
30	Brittany Gregory		0/0	0/0	0/0	0	0	0	0	0	0	0	0	0	DNP
34	Chelsey Smith		0/0	0/0	0/0	0	0	0	0	0	0	0	0	0	DNP
31	Tiffany Dobbs		0/0	0/0	0/0	0	0	0	0	0	0	0	0	0	DNP
43	Whitney Neal		0/0	0/0	0/0	0	0	0	0	0	0	0	0	0	DNP
	Team						2	1	3						
	Totals		9/24	2/14	15/20	39	10	20	30	17	3	20	0	8	160
	2 PT FG		1st Half	3/9	33.3%	2nd Half	6/15	40.0%	Game	9/24	37.5%				
	3 PT FG		1st Half	0/7	0.00%	2nd Half	2/7	28.6%	Game	2/14	14.3%				
	Free Throws		1st Half	5/6	83.3%	2nd Half	10/14	71.4%	Game	15/20	75.0%				

Home: Butler Bearettes

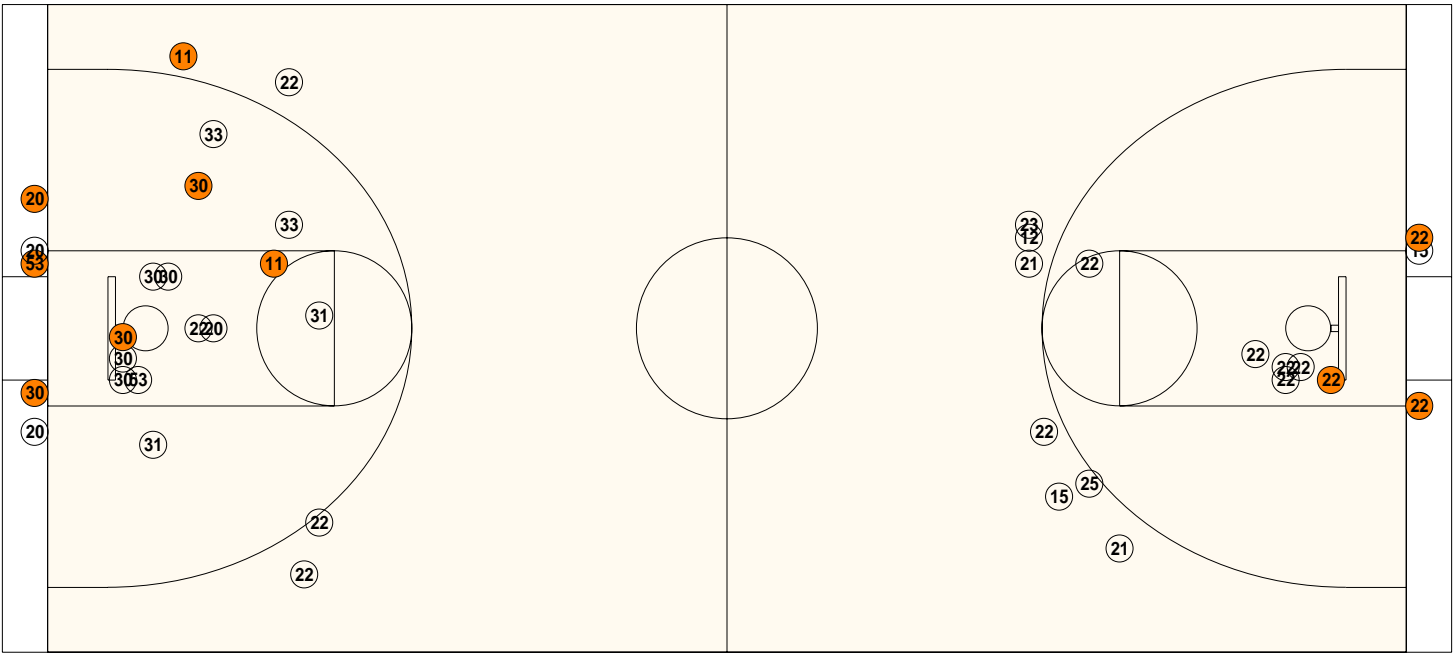
##	Name	P	FG	3 Pt	FT	PTS	ORB	DRB	TR	PF	AST	TO	BS	ST	MIN
4	Katie Pratt		0/0	0/0	0/0	0	0	0	0	0	0	0	0	0	DNP
11	* Jenna Hedges		1/4	1/1	0/0	5	0	2	2	4	1	4	0	0	23:13
20	* Megan McGrath		2/6	0/1	4/5	8	0	3	3	4	4	3	0	3	22:07
21	Jessica Paul		0/0	0/0	0/0	0	0	0	0	0	0	0	0	0	DNP
22	* Mandy Evans		0/2	0/3	0/0	0	1	2	3	4	2	5	0	1	24:42
24	Dana Price		0/0	0/0	0/0	0	0	0	0	0	0	0	0	0	4:47
25	Abby Grunwald		0/0	0/0	0/0	0	0	0	0	1	0	0	0	0	1:28
30	* Ashley Lewallen		5/13	0/0	3/6	13	7	7	14	2	1	2	3	3	28:02
31	Rachel Cummings		0/2	0/0	0/0	0	2	0	2	1	0	0	1	0	14:11
32	Ainsley Lambert		0/0	0/0	0/0	0	0	0	0	0	0	0	0	0	DNP
33	Nicole Holman		1/5	0/0	4/7	6	1	2	3	0	2	2	0	1	20:48
42	Ashley Harper		0/0	0/0	0/0	0	0	0	0	0	0	0	0	0	DNP
53	* Tia Gibbs		5/8	0/0	1/2	11	4	2	6	4	0	1	1	4	20:42
	Team						0	2	2			1			
	Totals		14/40	1/5	12/20	43	15	20	35	20	10	18	5	12	160
	2 PT FG		1st Half	6/19	31.6%	2nd Half	8/21	38.1%	Game	14/40	35.0%				
	3 PT FG		1st Half	1/4	25.0%	2nd Half	0/1	0.00%	Game	1/5	20.0%				
	Free Throws		1st Half	1/2	50.0%	2nd Half	11/18	61.1%	Game	12/20	60.0%				

	WAYN	BUTL		WAYN	BUTL		WAYN	BUTL
Free Throw Pts	15	12	3Pt Points	6	3	Pts/Possession	0.67	0.74
Pts off Turnovers	14	21	2nd Chance Points	6	12	Pts off Bench	0	6
Total Rebounds	30	35	Team Rebounds	3	2	Dead Ball Reb	2	5
Off Rebound %	33.3	42.9	Def Rebound %	57.1	66.7	Total Rebound %	46.2	53.8
3Pt Efficiency	-10.7	-3.3	Def. Stops	38	40	Pts/Shot	0.81	0.78
Technical Fouls	WAYN	BUTL						
			None	None				
Officials	BUTL							
			Todd Duff, Tony Beard, Joseph Billman					

	Qtr 1	Qtr 2	Qtr 3	Qtr 4	OT 1	OT 2	OT 3	OT 4	Total
Wayne County Cardinals	4	7	16	12	0	0	0	0	39
Butler Bearettes	7	9	18	9	0	0	0	0	43

Largest Lead BUTL 36 WAYN 27 (9 pts) **Lead Changes** 2 **Number of Ties** 2
Comments: None

FIRST HALF



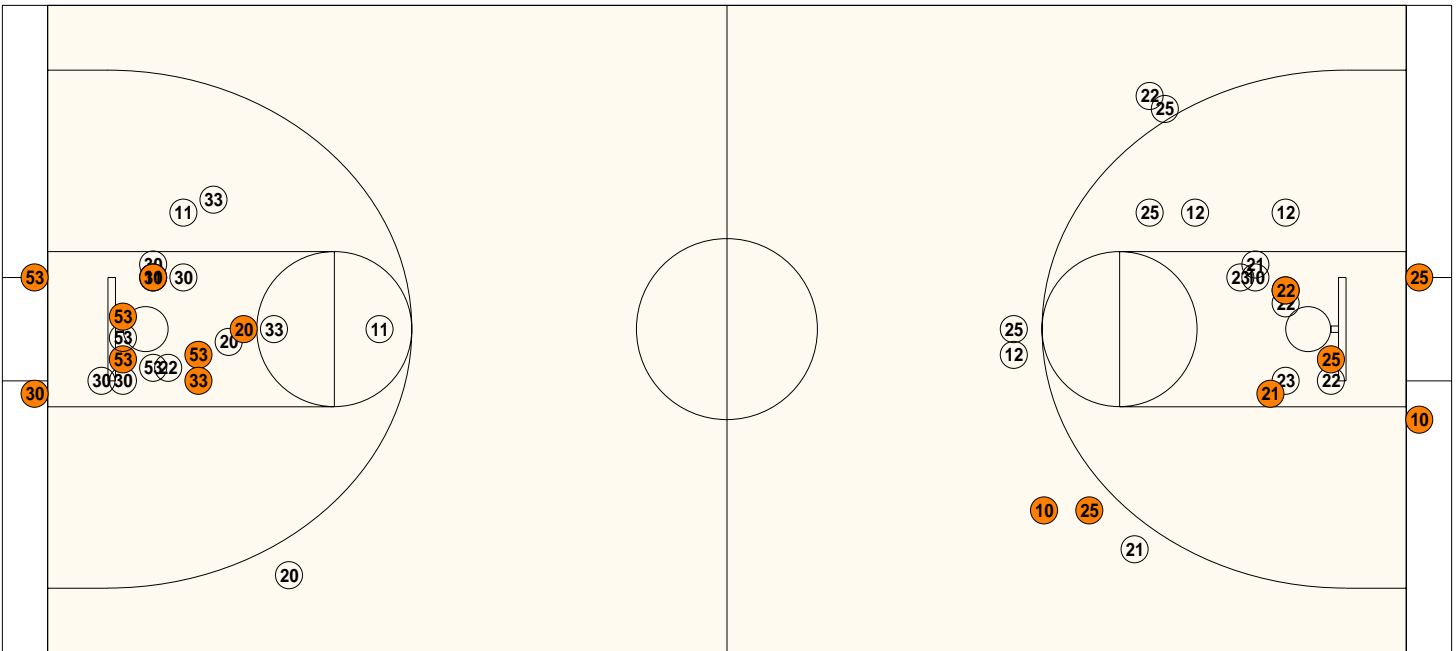
Butler

Shooting	Pts	Pts
2FG 6/19 (31.6%)	12	Pts/Shot 0.67
3FG 1/4 (25.0%)	3	2nd Eff Pts 5
TFG 7/23 (30.4%)		Pts off TO's 7
FT 1/2 (50.0%)	1	3Pt Eff +3.9
Scoring Distribution: 2FG 75.0% 3FG 18.8% FT 6.3%		

Wayne County

Shooting	Pts	Pts
2FG 3/9 (33.3%)	6	Pts/Shot 0.58
3FG 0/7 (0.00%)	0	2nd Eff Pts 4
TFG 3/16 (18.8%)		Pts off TO's 3
FT 5/6 (83.3%)	5	3Pt Eff -22.2
Scoring Distribution: 2FG 54.5% 3FG 0.0% FT 45.5%		

SECOND HALF

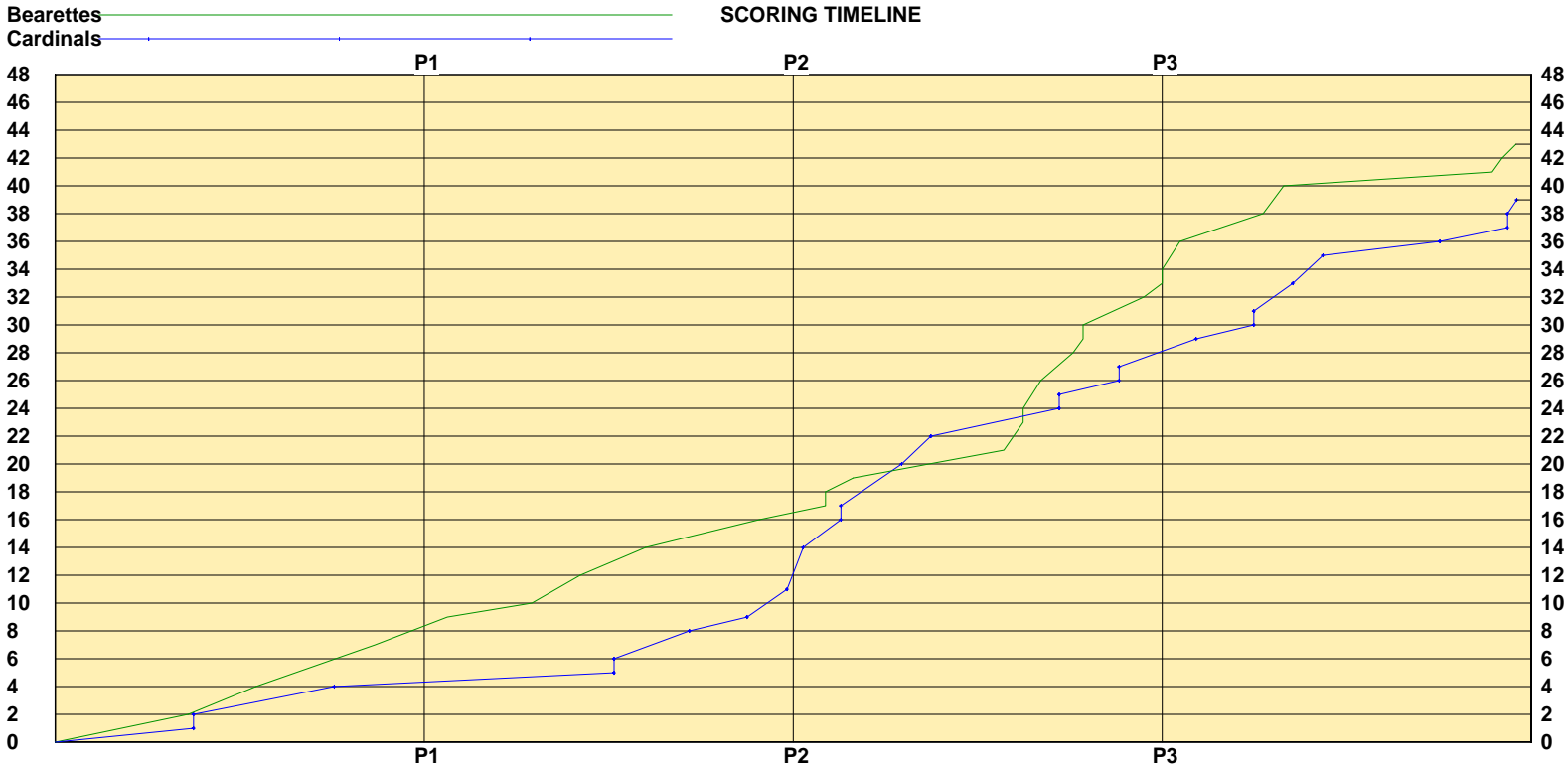
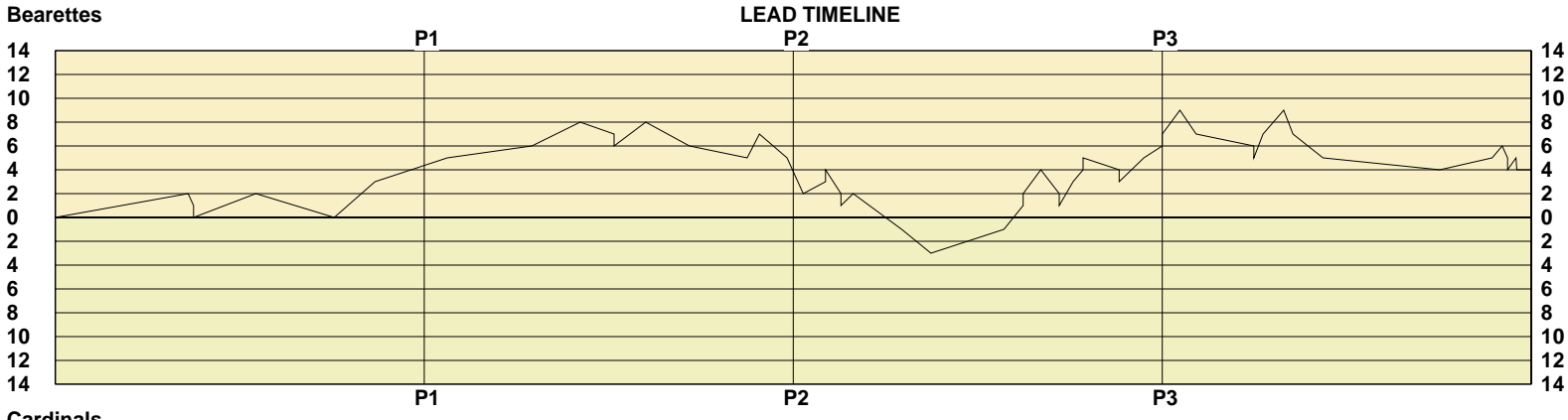


Butler

2FG 8/21 (38.1%)	16s	Pts/Shot 0.87
3FG 0/1 (0.00%)	0	2nd Eff Pts 7
TFG 8/22 (36.4%)		Pts off TO's 14
FT 11/18 (61.1%)	11	3Pt Eff -25.4
Scoring Distribution: 2FG 59.3% 3FG 0.0% FT 40.7%		

Wayne County

2FG 6/15 (40.0%)	12s	Pts/Shot 0.97
3FG 2/7 (28.6%)	6	2nd Eff Pts 2
TFG 8/22 (36.4%)		Pts off TO's 11
FT 10/14 (71.4%)	10	3Pt Eff +1.9
Scoring Distribution: 2FG 42.9% 3FG 21.4% FT 35.7%		



Largest Lead BUTL 36 WAYN 27 (9 pts) Lead Changes 2 Number of Ties 2

KHSAA Basketball - Play by Play Report - Scoring Only (pg 1)

Butler Bearettes vs. Wayne County Cardinals

Date: 03/26/2004 Time: 12 Noon CST Site: Diddle Arena-Bowling Green, KY Attendance: N

Name	Action	Action	Score	Clock	Diff	Name	Action	Action
A Lewallen	Layup Made	M McGrath Assist	2-0	1 5:07	+2 (L1)			
			2-1	1 5:00	+1	N Brown	FT Made	
			2-2	1 5:00	(T1)	N Brown	FT Made	
T Gibbs	Layup Made	M McGrath Assist	4-2	1 3:39	+2			
			4-4	1 1:57	(T2)	A Bell	Putback Made	
J Hedges	3Pt Made	N Holman Assist	7-4	1 1:04	+3			

End of Period Summary Bearettes 7 Cardinals 4

Largest Lead: Bearettes 7 Cardinals 4 (3 pts)

Lead in Period: Bearettes 7 Cardinals 4 (3 pts)

4 for 0 oppo pts

4 for 2 pts

3/11 for 27.3 %

0/0 for 0.00 %

Turnovers

2nd Chances

Field Goals

Free Throws

Lead Changes: 1 Ties: 2

Lead Changes: 0 Ties: 2 (this period)

5 for 4 oppo pts

3 for 2 pts

1/8 for 12.5 %

2/2 for 100 %

A Lewallen	FG Made	J Hedges Assist	9-4	2 7:30	+5			
M McGrath	FT Made		10-4	2 5:40	+6			
J Hedges	FG Made		12-4	2 4:37	+8			
			12-5	2 3:53	+7	N Brown	FT Made	
			12-6	2 3:53	+6	N Brown	FT Made	
M McGrath	Layup Made	N Holman Assist	14-6	2 3:12	+8			
			14-8	2 2:15	+6	A Bell	Layup Made	K Ball Assist
			14-9	2 1:00	+5	K Ball	FT Made	
A Lewallen	Putback Made		16-9	2 0:44	+7			
			16-11	2 0:08	+5	A Bell	Layup Made	

End of Period Summary Bearettes 16 Cardinals 11

Largest Lead: Bearettes 12 Cardinals 4 (8 pts)

Lead in Period: Bearettes 12 Cardinals 4 (8 pts)

5 for 3 oppo pts

3 for 3 pts

4/12 for 33.3 %

1/2 for 50.0 %

Turnovers

2nd Chances

Field Goals

Free Throws

Lead Changes: 1 Ties: 2

Lead Changes: 0 Ties: 0 (this period)

7 for 3 oppo pts

3 for 2 pts

2/8 for 25.0 %

3/4 for 75.0 %

			16-14	3 7:47	+2	L Green	3Pt Made	
M McGrath	FT Made		17-14	3 7:18	+3	A Bell	Personal Foul	
M McGrath	FT Made		18-14	3 7:18	+4			
			18-16	3 6:58	+2	A Bell	FG Made	
A Lewallen	Personal Foul		18-17	3 6:58	+1	A Bell	FT Made	
T Gibbs	FT Made		19-17	3 6:42	+2	N Brown	Personal Foul	
			19-20	3 5:39	-1 (L2)	K Ball	3Pt Made	A Bell Assist
			19-22	3 5:01	-3	A Bell	FG Made	K Ball Assist
T Gibbs	Putback Made		21-22	3 3:26	-1			
M McGrath	FG Made		23-22	3 3:01	+1 (L3)			
M McGrath	FT Made		24-22	3 3:01	+2	N Brown	Personal Foul	
A Lewallen	Layup Made	M McGrath Assist	26-22	3 2:38	+4			
			26-24	3 2:14	+2	K Ball	Layup Made	
			26-25	3 2:14	+1	K Ball	FT Made	
T Gibbs	FG Made	M McGrath Assist	28-25	3 1:56	+3			
A Lewallen	FT Made		29-25	3 1:43	+4			
A Lewallen	FT Made		30-25	3 1:43	+5			

KHSAA Basketball - Play by Play Report - Scoring Only (pg 2)

Butler Bearettes vs. Wayne County Cardinals

Date: 03/26/2004 Time: 12 Noon CST Site: Diddle Arena-Bowling Green, KY Attendance: N

Name	Action	Action	Score	Clock	Diff	Name	Action	Action
			30-26	3	0:56	+4	L Green	FT Made
			30-27	3	0:56	+3	L Green	FT Made
T Gibbs	Layup Made	A Lewallen Assist	32-27	3	0:24	+5		
N Holman	FT Made		33-27	3	0:00	+6	K Ball	Personal Foul
N Holman	FT Made		34-27	3	0:00	+7		

End of Period Summary Bearettes 34 Cardinals 27

Largest Lead: Bearettes 12 Cardinals 4 (8 pts)	Lead Changes: 3 Ties: 2
Lead in Period: Bearettes 34 Cardinals 27 (7 pts)	Lead Changes: 2 Ties: 0 (this period)
4 for 9 oppo pts	6 for 11 oppo pts
5 for 5 pts	1 for 0 pts
5/13 for 38.5 %	5/9 for 55.6 %
8/9 for 88.9 %	4/5 for 80.0 %
Turnovers	
2nd Chances	
Field Goals	
Free Throws	

A Lewallen	FG Made	M Evans Assist	36-27	4	7:37	+9		
			36-29	4	7:16	+7	L Green	Putback Made
			36-30	4	6:01	+6	K Ball	FT Made
			36-31	4	6:01	+5	K Ball	FT Made
N Holman	FG Made	M Evans Assist	38-31	4	5:49	+7		
T Gibbs	Putback Made		40-31	4	5:22	+9		
			40-33	4	5:10	+7	N Brown	FG Made
			40-35	4	4:31	+5	L Green	Layup Made
			40-36	4	1:59	+4	A Bell	FT Made
N Holman	FT Made		41-36	4	0:51	+5	A Bell	Personal Foul
A Lewallen	FT Made		42-36	4	0:38	+6	S Wixson	Personal Foul
			42-37	4	0:31	+5	L Green	FT Made
			42-38	4	0:31	+4	L Green	FT Made
N Holman	FT Made		43-38	4	0:20	+5		
			43-39	4	0:19	+4	K Ball	FT Made

End of Period Summary Bearettes 43 Cardinals 39

Largest Lead: Bearettes 36 Cardinals 27 (9 pts)	Lead Changes: 3 Ties: 2
Lead in Period: Bearettes 36 Cardinals 27 (9 pts)	Lead Changes: 0 Ties: 0 (this period)
5 for 2 oppo pts	2 for 3 oppo pts
3 for 2 pts	3 for 2 pts
3/9 for 33.3 %	3/13 for 23.1 %
3/9 for 33.3 %	6/9 for 66.7 %
Turnovers	
2nd Chances	
Field Goals	
Free Throws	

OFFICIAL BASKETBALL BOX SCORE
Wayne County Cardinals vs Butler Bearettes

03/26/2004 12 Noon CST
Final Box Score

Diddle Arena
Bowling Green, KY

No.	Wayne County Cardinals	Total FG		3-point		Free throw		Rebounds			F	TP	A	TO	BLK	STL	MIN
		FG	FGA	FG	FGA	FT	FTA	Off	Def	Tot							
10	Kenita Ball	2	3	1	1	5	8	0	0	0	4	10	2	6	0	0	29:45
12	Kara Gothrup	0	4	0	2	0	0	0	0	0	0	0	0	2	0	0	3:58
13	Mandi Perkins	0	0	0	0	0	0	0	0	0	1	0	0	1	0	0	3:46
14	Heather Stearns	0	0	0	0	0	0	0	0	0	0	0	0	0	0	0	DNP
15	Courtney Duncan	0	2	0	1	0	0	1	0	1	0	0	0	2	0	0	8:55
22	Ashley Bell	5	14	0	2	2	4	3	10	13	5	12	1	3	0	3	31:03
25	Latoyia Green	3	7	1	4	4	4	3	6	9	0	11	0	2	0	0	30:51
23	Sarah Wixson	0	3	0	1	0	0	0	3	3	3	0	0	2	0	3	30:31
21	Natalie Brown	1	5	0	3	4	4	1	0	1	4	6	0	2	0	2	21:10
20	Lindsey Jones	0	0	0	0	0	0	0	0	0	0	0	0	0	0	0	0:01
24	Lindsey Dishman	0	0	0	0	0	0	0	0	0	0	0	0	0	0	0	DNP
30	Brittany Gregory	0	0	0	0	0	0	0	0	0	0	0	0	0	0	0	DNP
34	Chelsey Smith	0	0	0	0	0	0	0	0	0	0	0	0	0	0	0	DNP
31	Tiffany Dobbs	0	0	0	0	0	0	0	0	0	0	0	0	0	0	0	DNP
43	Whitney Neal	0	0	0	0	0	0	0	0	0	0	0	0	0	0	0	DNP
Team (Included in Totals)								2	1	3							
Totals		11	38	2	14	15	20	10	20	30	17	39	3	20	0	8	160
Total FG%:1st half 3 - 16 (18.8%)		2nd half 8 - 22 (36.4%)		Game 11 - 38 (28.9%)		Deadball											
3Pt FG%: 1st half 0 - 7 (0.00%)		2nd half 2 - 7 (28.6%)		Game 2 - 14 (14.3%)		rebounds											
FT%: 1st half 5 - 6 (83.3%)		2nd half 10 - 14 (71.4%)		Game 15 - 20 (75.0%)		2											

No.	Butler Bearettes	Total FG		3-point		Free throw		Rebounds			F	TP	A	TO	BLK	STL	MIN
		FG	FGA	FG	FGA	FT	FTA	Off	Def	Tot							
4	Katie Pratt	0	0	0	0	0	0	0	0	0	0	0	0	0	0	0	DNP
11	Jenna Hedges	2	5	1	1	0	0	0	2	2	4	5	1	4	0	0	23:13
20	Megan McGrath	2	7	0	1	4	5	0	3	3	4	8	4	3	0	3	22:07
21	Jessica Paul	0	0	0	0	0	0	0	0	0	0	0	0	0	0	0	DNP
22	Mandy Evans	0	5	0	3	0	0	1	2	3	4	0	2	5	0	1	24:42
30	Ashley Lewallen	5	13	0	0	3	6	7	7	14	2	13	1	2	3	3	28:02
33	Nicole Holman	1	5	0	0	4	7	1	2	3	0	6	2	2	0	1	20:48
53	Tia Gibbs	5	8	0	0	1	2	4	2	6	4	11	0	1	1	4	20:42
31	Rachel Cummings	0	2	0	0	0	0	2	0	2	1	0	0	0	1	0	14:11
24	Dana Price	0	0	0	0	0	0	0	0	0	0	0	0	0	0	0	4:47
25	Abby Grunwald	0	0	0	0	0	0	0	0	0	1	0	0	0	0	0	1:28
32	Ainsley Lambert	0	0	0	0	0	0	0	0	0	0	0	0	0	0	0	DNP
42	Ashley Harper	0	0	0	0	0	0	0	0	0	0	0	0	0	0	0	DNP
Team (Included in Totals)								0	2	2							
Totals		15	45	1	5	12	20	15	20	35	20	43	10	18	5	12	160
Total FG%:1st half 7 - 23 (30.4%)		2nd half 8 - 22 (36.4%)		Game 15 - 45 (33.3%)		Deadball											
3Pt FG%: 1st half 1 - 4 (25.0%)		2nd half 0 - 1 (0.00%)		Game 1 - 5 (20.0%)		rebounds											
FT%: 1st half 1 - 2 (50.0%)		2nd half 11 - 18 (61.1%)		Game 12 - 20 (60.0%)		5											

Technical Fouls: None

Attendance: N

Officials: Todd Duff, Tony Beard, Joseph Billman

Score by Period	1st	2nd	3rd	4th	Final	Record	Overall	Conf
Wayne County Cardinals	4	7	16	12	39	Cardinals		
Butler Bearettes	7	9	18	9	43	Bearettes		

	Bearettes	Cardinals	Bearettes	Cardinals	Bearettes	Cardinals		
Points off Turnovers	21	14	Second Effort Points	12	6	Bench Points	6	0
Points in the Paint	22	16	3 Point Points	3	6	Free Throw Points	12	15
3pt Efficiency	-3.3	-10.7	Points/Shot	0.78	0.81	Defensive Stops	40	38
Largest Lead	36	27 (9 pts)	Lead Changes	2		Number of Ties	2	

Game comments: None